

## ASSET MONITORING & HEALTH ANALYSIS SOLUTIONS (AMS)

Implement predictive intelligence and integrated protection technologies to reach business goals and achieve top-quartile reliability. With AMS technologies, you get asset management and condition indicator capabilities specific to the nature and criticality of production assets.

### MAJOR ASSET PERFORMANCE SOFTWARE

#### PLANTWEB OPTICS

A collaborative digital environment with multiple assessment interfaces for a holistic view of asset health, secure yet flexible architecture, workflow integration to drive proactive operations, and a built-in historian.



#### KNET ADVANCED ANALYTICS

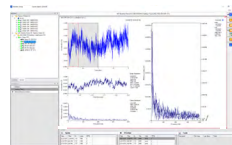
Using a combination of Advanced Analytics and Event Detection techniques, KNet pulls information from control systems, databases, plant applications and operation procedures to detect abnormal events, manage performance deviations, increase visibility across the enterprise, all to deliver knowledge better and faster to shorten decision-making time.



### PREDICTIVE / DIAGNOSTIC SOFTWARE

#### AMS MACHINE WORKS / AMS MACHINERY MANAGER

Combines predictive maintenance techniques with comprehensive analysis tools to provide easy and accurate assessment of the machinery health in the facility. The monitoring solution and/or device you choose will determine what software is right for your operation. Also available as a SaaS or Cloud-hosted software option.



#### AMS DEVICE MANAGER

Provides a window into the health of intelligent field devices. Based on real-time condition data from your intelligent field devices, plant staff can respond fast and make informed decisions on whether to maintain or replace field devices.



#### AMS DEVICE VIEW

Extend your asset management capabilities to anywhere with an internet connection. View device health and calibration status information using mobile-friendly dashboards during projects.

#### AMS INSPECTION ROUNDS

Digitizes information collected during inspection routes to drive operations and maintenance action. Improve data accuracy, identify safety issues earlier, gain deeper insights, and make better decisions.



### WIRELESS MONITORING SOLUTIONS

#### AMS WIRELESS VIBRATION MONITOR

- Tri-axial Vibration + Temp Sensor
- 13 Trend Values
- PeakVue and embedded prescriptive analytics
- Secure WirelessHART® Mesh Network
- CSA Class 1 Div.1 / IP66 / NEMA 4x Enclosure



#### AMS 9420 WIRELESS VIBRATION TRANSMITTER

- Vibration + Temp sensor
- 8 Trend Values
- PeakVue predictive diagnostics
- Battery or line powered
- Secure WirelessHART® Mesh Network
- CSA Class 1 Div. 1 / IP66 / NEMA 4x Enclosure



#### WIRELESS GATEWAYS

- Up to 100 devices per wireless gateway
- Integrate with DeltaV™ and AMS Software
- Secure WirelessHART® Mesh Network
- Modbus TCP, Modbus RTU, and OPC
- CSA Class 1 Div. 2 / IP66 / NEMA 4x Enclosure



### PORTABLE DEVICES

#### AMS TREX DEVICE COMMUNICATOR

- Commission, diagnose, and troubleshoot devices
- Bluetooth and Wi-Fi compatible
- Powers HART loops and Fieldbus devices directly
- Auto Sync with AMS Device Manager
- Full-shift battery life, 32GB of storage
- IP 54 Housing, ATEX/CSA/IECEX/FISCO Approved



#### AMS 2140 MACHINERY HEALTH ANALYZER

- Route-based machinery health analyzer
- 4-Channel + Tri-axial Phase/Tachometer
- PeakVue predictive diagnostics
- Wi-Fi, Bluetooth, Ethernet, and USB 2.0
- CSA Class 1 Div. 2, ATEX Zone 2
- IECEx Zone 2



### CONTINUOUS MONITORING SOLUTIONS

#### AMS ASSET MONITOR (EDGE ANALYTICS DEVICE)

- Prediction, protection, and process analyzer
- Embedded prescriptive analytics
- 12-Channel w. CHARMs I/O technology
- Wired or Wireless Ethernet
- CSA Class 1 Div. 2, ATEX Zone 2



#### AMS 6500 MACHINERY HEALTH MONITOR

- Online condition and prediction
- PeakVue predictive diagnostics
- 24 channels, multiple assets
- Modbus, XML Data Transfer, OPC DA, etc.
- CSA Class 1 Div. 2, ATEX Zone 2
- IECEx Zone 2



#### AMS 6500 ATG PROTECTION + PREDICTION

- Online protection system for critical assets
- PeakVue predictive diagnostics
- OPC UA, Modbus TCP/IP and Modbus RTU
- API 670 compliant
- CSA Class 1 Div.2
- ATEX Zone 2
- IECEx Zone 2



#### AMS 6300 SIS DIGITAL OVERSPEED PROTECTION

- 3-Channel safety system for critical rotating assets
- Supports eddy current measuring chains
- SIL 3 rotational speed measurement
- SIL 2 rotational direction detection
- PC Configurable and Profibus



#### AMS EZ1000 EDDY CURRENT CONVERTER

- Supports all sensor types and cable lengths
- Easy on-site calibration and configuration
- API 670 compliant
- CSA Class 1 Div. 2, ATEX Zone 2



#### SENSORS & CABLES

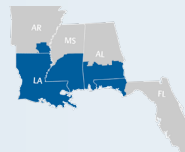
- We offer a wide array of sensors and cables for various applications and hazardous ratings.

## MECHANICAL RELIABILITY SOLUTIONS (RS) LOCATIONS

Baton Rouge, LA Sales/Engineering Center	Sulphur, LA Sales / Service Office	Mobile, LA Sales / Service Office	Metairie, LA Sales / Service Office	Lafayette, LA Sales / Service Office
14141 Airline Hwy Building 3, Suite N Baton Rouge, LA 70817 225-751-3788	650 East Highway 108 Sulphur, LA 70665 337-583-8420	2203 Perimeter Rd. Ste 300 Mobile, AL 36615 251-653-9898	2728 N. Arnould Road Metairie, LA 504-887-8550	401 Wall Street Lafayette, LA 70506 337-233-8331

## OTHER LOCATIONS

BATON ROUGE  
GEISMAR  
LAFAYETTE  
LAKE CHARLES  
METAIRIE  
MONROE  
SHREVEPORT



## RELATED SOLUTIONS

ASSET MANAGEMENT SOLUTIONS  
CONTROLWORX: SERVICE & SUPPORT SOLUTIONS  
CONTROL AND SAFETY SYSTEM SOLUTIONS  
EDUCATION SERVICES  
ENGINEWORX: ENGINE & COMPRESSOR SOLUTIONS  
FISHER CONTROL VALVES & FLOW SOLUTIONS  
INSTRUMENTATION & INDUSTRIAL EQUIPMENT

MEASUREMENT SOLUTIONS PPE: PROCESS  
PUMPS & EQUIPMENT  
PRESSURE MANAGEMENT SOLUTIONS  
INDUSTRIAL & NATURAL GAS REGULATORS  
VALVES & AUTOMATION SOLUTIONS  
WATER & WASTEWATER SOLUTIONS

## SERVICE & SUPPORT

### PROJECT SERVICES

- System Inspection / FEED Studies
- Project Management
- API 670 Machinery Protection System Design and Installation
- Factory Acceptance Testing (FAT)
- Site Acceptance Testing (SAT)
- Process Startup Support
- System Commissioning
- Software Database Services

### CONSULTING SERVICES

- Vibration Program Development
- Root Cause and Consultation
  - Motion Amplification Studies
  - Operational Deflection Shape (ODS) Studies
  - Acoustical Induced Vibration (AIV) Studies
  - Flow Induced Vibration (FIV) Studies
  - Failure Mode and Effects Analysis (FMEA)
  - Dynamic Pressure Studies
  - Valve Noise & Fatigue Studies
  - Mechanical Seal Evaluation and Design Support
- Education and Certification Offerings

### RUN AND MAINTAIN SERVICES

- Embedded Predictive Maintenance Contracts
- Remote and/or Onsite Data Analysis
- Balancing and Alignment Support
- Local Oil/Grease Lab – Sampling and Analysis
- Turbomachinery Analysis
- Infrared Thermography
- Electrical Motor Field Testing
- Lifecycle Care
- Emergency Support
- Dynamic Pressure Studies
- Spare Parts

24/7 SERVICE  
**225-751-3788**  
JOHNHCARTER.COM

**CONTROLWORX**  
A John H. Carter Company