

## COMBUSTION MANAGEMENT AND AUTOMATION SYSTEMS

### REMVUE

#### Full Automation with Combustion Management for Advanced Applications

- Combustion Management using advanced algorithms, resulting in the tightly controlled emissions with the lowest BSFC,
- Advanced algorithms support varying fuel BTU contents
- Start/Stop Sequencing
- Digital Speed Governing
- Load Control
- Advanced Diagnostics
- Emissions tracking and reporting
- GHG emissions capture, measurement and combustion



**Multiple Platforms Available** REMVue 500, REMVue 600 & REMVue LX, REMVue 700, Emerson PK and Delta V SlipStream

### System Upgrades

#### REMVue 505

- Field replacement for older R300 systems with minimal downtime

### FW MURPHY PRODUCTION CONTROLS

#### Auto Start/Stop and Safety Shutdown Panels

#### TTD Annunciator Panels

- Alarm and Shutdown with Modbus communications

#### Centurion C4, C5 and Centurion PLUS Custom Panels

- State of the art full function digital controls

#### Millennium Upgrades

- In-field replacements of legacy Millennium systems using Centurion platform



## NATURAL GAS ENGINE AND COMPRESSOR CONTROLS

### FW MURPHY PRODUCTION CONTROLS

#### Emissions Controls for Richburn and Leanburn Engines

#### AFR1 single setpoint controller

#### AFR9, AFR64R and AFR64L multi-setpoint load tracking controllers

#### Digital Ignition Systems

#### Intellispark Ignition for engines up to 20 cylinders

- Crankshaft referenced systems with +/- .10 degree accuracy
- Advanced diagnostics of input signals, primary and secondary circuits
- Secondary prognostics use attenuated feedback from individual coils



### Integrated Ignition, AFR, Emissions and Speed

#### Controls Engine Integrated Control System (EICS)

- Ready-to-Run kits for compressors and generators
- Emissions kits for applications within EPA attainment and non-attainment locations



### BG

#### Ignition Accessories

#### Denso Spark Plugs

- Ignition Primary & Secondary Leads and Spark Plug Extensions



## STARTING SYSTEMS FOR ENGINES AND TURBINES

### TECH DEVELOPMENT (TDI)

#### Turbine Air Starters, Regulators and Accessories for engines from 5 to 100+ Liters

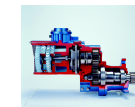
#### T6/T7 Series

- State of the Art starters for Reciprocating Engines  
Lowest weight to HP ratio



#### T30, T50 and T100 "TurboTwin" series

- Inertia, Pre-Engaged, and Gas Turbine applications Industries most efficient starter



#### Starter REMAN programs

- Core based program that keeps spare units onsite and ready for use



## PORTABLE EMISSION ANALYZERS AND ACCESSORIES

### ECOM

#### Multi-gas analyzers for Engines, Turbines, and Boilers used for tuning, diagnostics, general and compliance testing

#### ECOM-B, CL2

- 2 gas analyzer

#### ECOM-D

- 3 gas, diagnostic and tuning analyzer

#### ECOM J2KN

- Advanced, multi-gas analyzer



## ENGINEWORX LOCATIONS

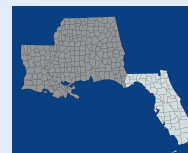
**Corporate Office  
Sales/Service**  
17630 Perkins Rd.  
Baton Rouge, LA 70810  
**225-751-3788**

**Lafayette Office  
Sales/Service**  
401 Wall St.  
Lafayette, LA 70506  
**337-233-8331**

**Metairie Office  
Sales/Service**  
2728 N. Arnoult Rd.  
Metairie, LA 70002  
**504-887-8550**

**Mobile Office  
Sales/Service**  
2203 Perimeter Rd. Ste  
300  
Mobile, AL 36615  
**251-653-9898**

**Shreveport Office  
Sales/Service**  
9656 St. Vincent Ave.  
Shreveport, LA 71106  
**318-861-0168**



## BRANDS



## SERVICE & SUPPORT

### Factory trained and accredited

#### SHOP SERVICES

- Ignition System Testing
- Primary and Secondary Lead manufacture and repair
- Ignition and Thermocouple Header systems
- Lubrication System component testing
- Engine Starter Repairs
- Panels and FATs

#### FIELD SERVICES

- Panel installations and commissioning
- REMVue and Murphy Panel Retrofits
- PMs and Reciprocating Machinery (Beta) analysis
- Ignition and AFR system troubleshooting and installations
- Emissions Testing and tuning
- Lubrication System PM, troubleshooting and installations
- Engine Starter installations
- Maintenance Programs

**24/7 SERVICE**

**225-751-3788**

**JOHNHCARTER.COM**

**CONTROLWORX**  
A John H. Carter Company

## COMPRESSOR LUBRICATION SYSTEMS

### COMPRESSOR PRODUCTS INTERNATIONAL

#### Lubricator Pumps and Gearboxes for Engines and Compressors

##### Proflo® EOS

- Self-adjusting lubrication pump system which monitors oil flow, automatically adjusts for pump wear and allows for remote control of flow rates based on unit conditions

##### OE Style Gearboxes

- Lubricator boxes and pumps for OE applications using P55U series pumps.

##### HVLP Pump Systems

- The High Volume Lube Pump (HVLP) delivers precise quantities of lubrication

##### HD Divider Blocks

- HD Divider blocks proportion precise amounts of lubrication while reducing the number of potential leakage points in the system

#### Pressure Relief, Filtration and Accessories

##### Pressure Relief

- Pop Open Pressure Relief (POPR) is accurate, repeatable, and resettable which replaces old rupture discs

##### Filtration

- Hi and Lo pressure filtration units insure the longest like from your lubrication system

We offer field support ranging from PMs to complete system retrofits



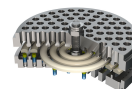
## COMPRESSOR VALVES, PACKING AND COATINGS

### COMPRESSOR PRODUCTS INTERNATIONAL

#### Compressor Valves

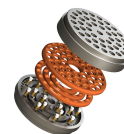
##### Hi-Flo RS Valve (Replaceable Seat Valve)

- Replaceable seat eliminates wear to the valve housing, eliminating the need for off-site reconditioning,
- Radiused disc ring design provides better gas flow, and allows processing of gases that contain debris and liquid slugs.
- Reduces the need for spare valve inventory and operating costs.



##### Hi-Flo RD Valve (Radiused Disc Ring Valve)

- Feature aerodynamic radiused profiled rings providing increased efficiency, reduced power consumption and reliable operation where temperatures and pressures are extreme.
- Aerodynamic rings allow the free passage of foreign material and liquid slugs.



#### Compressor Rod Packing

##### EMISSIONGUARD™ TR² Packing Ring

- MISSIONGUARD TR² packing ring multiplies the benefits of a tangent to rod ring and a step tangent ring by combining the two rings into one, providing a more efficient seal, reduced friction and extended lifetime.



#### Advanced Compressor Rod and Cylinder Repair Technology

##### Fivealloy™ Coatings

- Fivealloy™ coating and plasma spray process is an ideal method for repairing compressor piston rods, cylinders and cylinder liners to better-than-new condition, in many cases as an alternative to replacement where the component could not be otherwise repaired. CPI can also provide new components coated with Fivealloy™ to safely extend the life of each product



## DIESEL ENGINE CONTROLS AND INSTRUMENTATION

### ENOVATION CONTROLS

#### Controls and Displays for Mechanical and Electronically Controlled Engines

##### PowerCore Controllers

##### Ready-to-Run (RTR) Control Panels

- CANBus ready controls for pumps, generators and mechanical drives



##### PowerVision Controller and Displays

- Controls and Displays for Stationary and Marine Engines



##### MGC Series Generator Controls

- Controls for single and multiphase generators



##### End Devices

- Thermocouples and RTDs
- Pressure senders and transmitters
- Level displays, controllers and alarms
- Fuel Solenoids, Air Shutoffs, and Rack Pullers



## BRANDS



## RELATED SOLUTIONS

CONTROL AND SAFETY SYSTEMS  
 MECHANICAL RELIABILITY SOLUTIONS  
 VALVES & AUTOMATION  
 INSTRUMENTATIONPRESSURE REGULATORS  
 FLOW & MEASUREMENT

WATER & WASTEWATER SOLUTIONS  
 PROCESS PUMPS & EQUIPMENT SERVICES &  
 SUPPORT: CONTROLWORX  
 ENGINE & COMPRESSOR CONTROLS: ENGINEWORX  
 EDUCATIONAL SERVICES

## SERVICE & SUPPORT

Factory trained and accredited

### SHOP SERVICES

- Ignition System Testing
- Primary and Secondary Lead manufacture and repair
- Ignition and Thermocouple Header systems
- Lubrication System component testing
- Engine Starter Repairs
- Panels and FATs

### FIELD SERVICES

- Panel installations and commissioning
- REMVue and Murphy Panel Retrofits
- PMs and Reciprocating Machinery (Beta) analysis
- Ignition and AFR system troubleshooting and installations
- Emissions Testing and tuning
- Lubrication System PM, troubleshooting and installations
- Engine Starter installations
- Maintenance Programs

24/7 SERVICE

**225-751-3788**

JOHNHCARTER.COM

## ENGINEWORX LOCATIONS

**Corporate Office  
Sales/Service**  
 17630 Perkins Rd.  
 Baton Rouge, LA 70810  
 225-751-3788

**Lafayette Office  
Sales/Service**  
 401 Wall St.  
 Lafayette, LA 70506  
 337-233-8331

**Metairie Office  
Sales/Service**  
 2728 N. Arnoult Rd.  
 Metairie, LA 70002  
 504-887-8550

**Mobile Office  
Sales/Service**  
 2203 Perimeter Rd. Ste  
 300  
 Mobile, AL 36615  
 251-653-9898

**Shreveport Office  
Sales/Service**  
 9656 St. Vincent Ave.  
 Shreveport, LA 71106  
 318-861-0168



**CONTROLWORX**  
 A John H. Carter Company